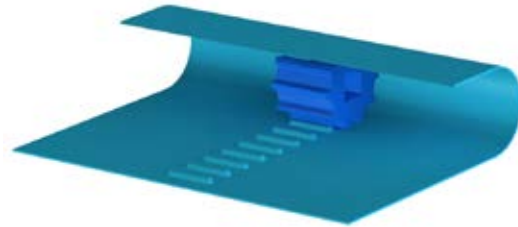




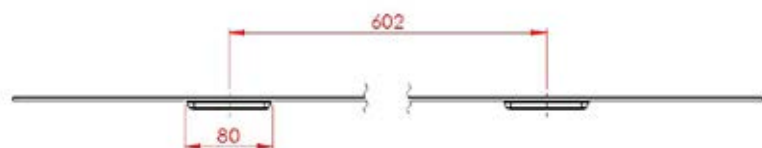
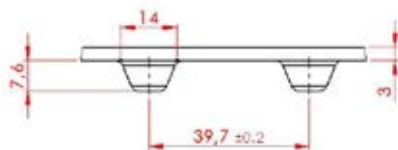
S/DRIVE



S/DRIVE positive drive belt.

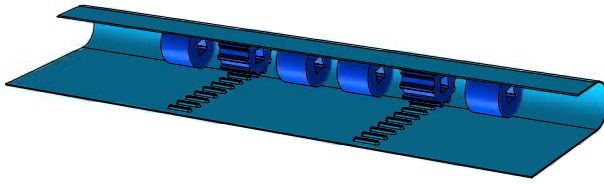


	S/DRIVE
Mafdel Reference	SDB40B3
Material	Polyurethane
Colour	Blue
Food approval	CE / FDA
Top surface texture	Smooth
Hardness	95 ShA
Tooth pitch (mm)	40
Actual pitch $\pm 0,2$ (mm)	39.7
Thickness (mm)	3
Total thickness (mm)	10.6
Max width (mm)	1550
Weight	3,6 kg/m ²
Minimum pulley diameter (mm)	100
Minimum back flex diameter (mm)	100
Operating temperatures	-20°C to +60°C
Traction force 2.5% lengthening per 100mm width	65 daN
Friction coefficient	
On HDPE bed	0.2
On stainless steel bed	0.52

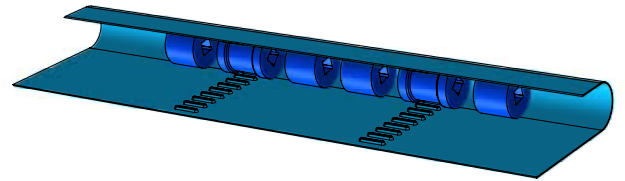




S/DRIVE

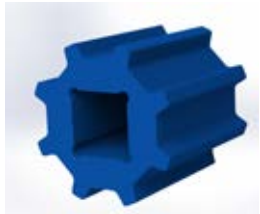


Drive



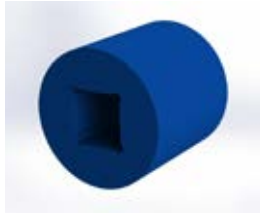
Non-driven

SPROCKETS



REFERENCE	MATERIAL	COLOUR	OUTER DIAMETER (mm)	NUMBER TEETH	BORE SQUARE (mm)	WIDTH (mm)
P40BUN08C40	HDPE	Blue	101.4	8	40	100
P40BUN10C40			127.5	10		
P40BUN12C40			152.8	12		
P40BUN14C40			178.8	14		
P40BUN16C40			204.8	16		
P40BUN18C40			230.7	18		
P40BUN20C40			256.7	20		

SUPPORT WHEEL



REFERENCE	MATERIAL	COLOUR	OUTER DIAMETER (mm)	NUMBER TEETH	BORE SQUARE (mm)	WIDTH (mm)
R40BUN08C40	HDPE	Blue	101.4	-	40	100
R40BUN10C40			127.5			
R40BUN12C40			152.8			
R40BUN14C40			178.8			
R40BUN16C40			204.8			
R40BUN18C40			230.7			
R40BUN20C40			256.7			

TAIL PULLEY



REFERENCE	MATERIAL	COLOUR	INSIDE DIAMETER (mm)	NUMBER TEETH	BORE SQUARE (mm)	WIDTH (mm)
D40BUN08C40	HDPE	Blue	85.4	-	40	100
D40BUN10C40			111.5			
D40BUN12C40			136.8			
D40BUN14C40			162.8			
D40BUN16C40			188.8			
D40BUN18C40			214.7			
D40BUN20C40			240.7			



MAFDEL

Z.I. Lafayette - 131, rue de la Plaine
38790 Saint Georges d'Espérance - FRANCE
Tel. +33 (0)4 78 96 21 90 - Fax : +33 (0)4 78 96 21 78
www.mafdel-belts.com - mafdel@mafdel.fr